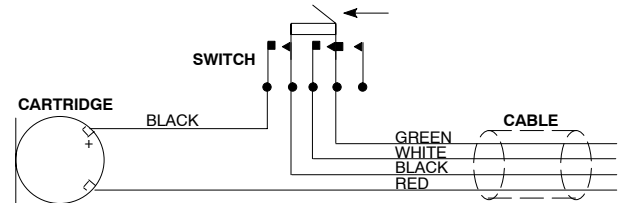




CONNECTIONS

The internal wiring and switch connections of the 527C are shown in Figure 1. A typical external operating circuit is shown in Figure 2. Circuit parameters such as supply voltage, load, current and sensitivity may be selected using the curves shown in Figures 3 and 4. If, for instance, the available supply voltage is 16 Vdc and a current drain of 4 mA is desired, a load resistance (R_L) of 2.2K Ω is necessary. With a supply voltage of 16 Vdc and a load resistance of 2.2K Ω , the relative sensitivity is approximately +8 dB, or -3 dB output level referenced to the specified output level of -11 dB with 10 Vdc and a 470 Ω load.



INTERNAL MICROPHONE CONNECTIONS
FIGURE 1

SHURE MODEL 527C

Transistorized Dynamic Hand-Held Microphone

The Shure Model 527C is a dynamic hand-held communications microphone designed for use in a variety of mobile and fixed-station applications, including police, transportation, amateur radio and similar applications. The 527C offers extremely low sensitivity to hum pickup and low susceptibility to radio-frequency interference. A built-in solid state amplifier permits the use of up to 30 m (100 ft) of unshielded cable.

The modular construction of the 527C allows the cartridge, switch, and cable to be replaced in a matter of minutes, if necessary.

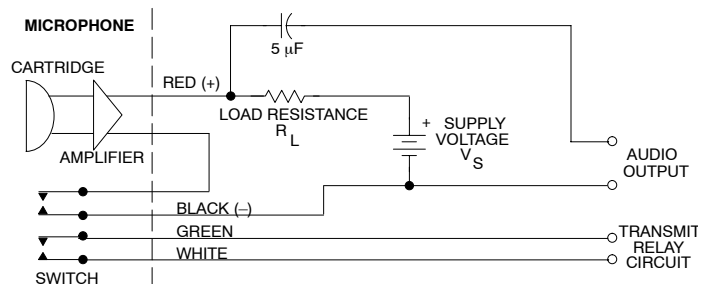
The 527C fits naturally and comfortably in the hand and is not adversely affected by heat or humidity. The ARMO-DUR® case is immune to oil, grease, fumes, salt spray, sun, rust and corrosion, and is outstanding in its ability to withstand mechanical shocks and vibration.

FEATURES

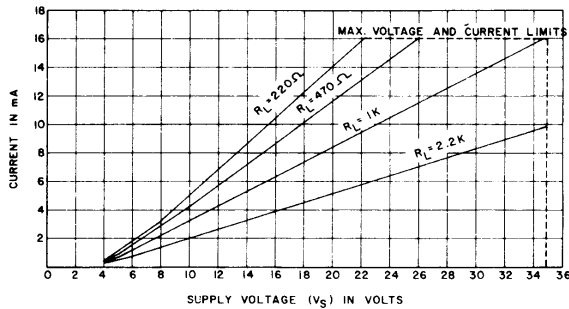
- Built-in amplifier
- Frequency response from 300 to 5,000 Hz, tailored for voice communications
- Low sensitivity to hum
- Low susceptibility to radio-frequency interference
- "Million-Cycle" leaf-type switch stands up under severe operating conditions and constant use
- High-impact ARMO-DUR® case — lighter and stronger than die-cast metal, comfortable to the touch in hot or cold weather
- Rugged and dependable under all operating conditions
- Long-life neoprene-jacketed coil cord

INPUT TYPE	WIRE COLOR	FUNCTION	XLR CONNECTOR	1/4 IN. PHONE PLUG
UNBALANCED	BLACK	AUDIO	PIN 2	TIP
	RED	AUDIO GROUND	PIN 3	SLEEVE
	SHIELD	CHASSIS GROUND	PIN 1	SLEEVE
BALANCED	BLACK	AUDIO +	PIN 2	TIP
	RED	AUDIO -	PIN 3	RING
	SHIELD	CHASSIS GROUND	PIN 1	SLEEVE

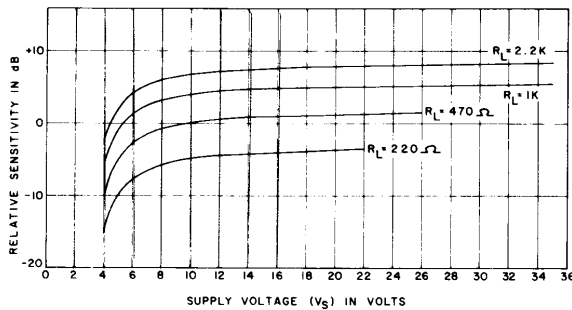
CABLE-TO-CONNECTOR WIRING
TABLE 1



TYPICAL OPERATING CIRCUIT
FIGURE 2



SUPPLY CURRENT AS A FUNCTION OF SUPPLY VOLTAGE AND LOAD RESISTANCE
FIGURE 3



SENSITIVITY AS A FUNCTION OF SUPPLY VOLTAGE AND LOAD RESISTANCE
FIGURE 4

CAUTION: To avoid damage to the 527C, observe the following:

- Supply voltage (*V*) must be between 4 and 35 Vdc. Voltages exceeding 35 Vdc may substantially reduce the life of the microphone. Voltages below 4 Vdc are not sufficient for microphone amplifier operation (although no damage will occur).
- Do not exceed the maximum allowable current (dissipation limit) for the various combinations of supply voltages and load resistances.
- Maintain proper polarity for the red (+) and black (-) leads as shown in Figures 1 and 2.

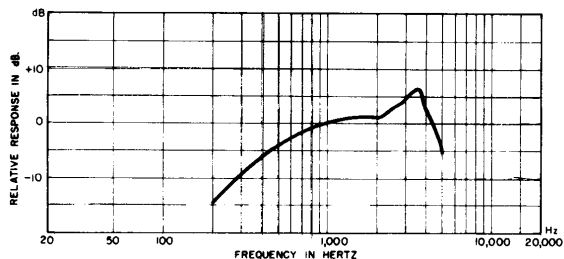
SPECIFICATIONS

Type

Dynamic (with transistor preamplifier)

Frequency Response

300 to 5,000 Hz (see Figure 5)



TYPICAL FREQUENCY RESPONSE
FIGURE 5

Sensitivity (at 1,000 Hz)

Open Circuit Voltage -31dBV/Pascal (28 mV)
 1 Pascal = 94 dB SPL

Load Impedance Range

220 to 2,200 ohms (see Figures 3 and 4)

Maximum Signal (with 10 Vdc, 470Ω load)

135 dB SPL at 1,000 Hz produces +10 dBV (3.2V) at 10% THD

DC Supply Voltage and Current

4 to 35 Vdc (see Figure 3)

Switch

Double-pole, single-throw, leaf-type

Cable

Non-detachable, 1.8 m (6 ft), 4-conductor, neoprene-jacketed coil cord

Case

Black high-impact ARMO-DUR®

Dimensions

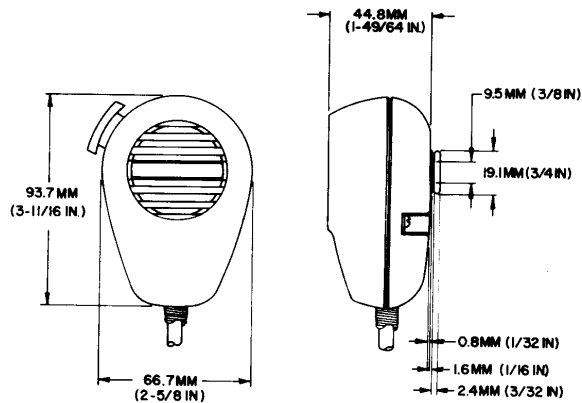
See Figure 6

Net Weight

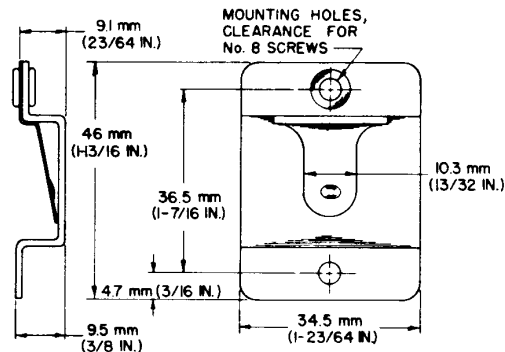
342 grams (12 oz)

Packaged Weight

483 grams (17 oz)



OVERALL MICROPHONE DIMENSIONS
FIGURE 6



MOUNTING BRACKET DIMENSIONS
FIGURE 7

FURNISHED ACCESSORY

Mounting Bracket* RK6MB

*Three in replacement kit.

REPLACEMENT PARTS

Cartridge R132

Switch Assembly RK319C

Cable C30C

For additional service or parts information, please contact Shure's Service Department at 1-800-516-2525. Outside the United States, please contact your authorized Shure Service Center.



SHURE Incorporated Web Address: <http://www.shure.com>
 5800 W. Touhy Avenue, Niles, IL 60714-4608, U.S.A.
 Phone: 800-257-4873 Fax: 847-600-1212
 In Europe, Phone: 49-7131-72140 Fax: 49-7131-721414
 In Asia, Phone: 852-2893-4290 Fax: 852-2893-4055
 Elsewhere, Phone: 847-600-2000 Fax: 847-600-6446